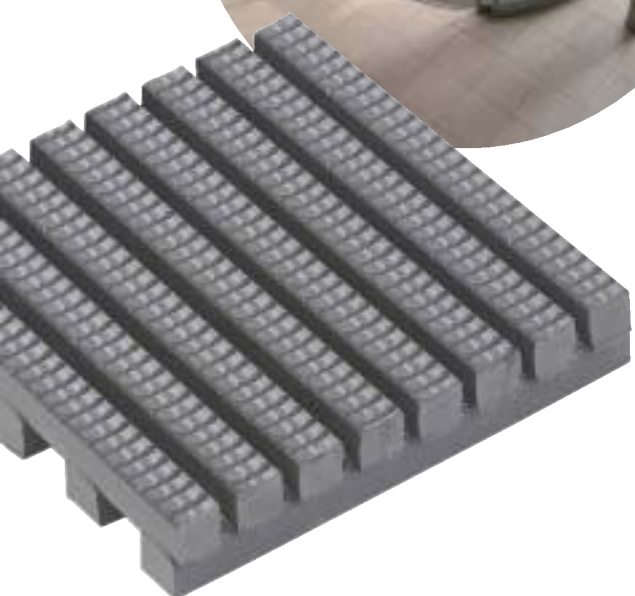
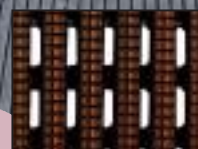


# FRONTRUNNER ENTRY

The original 'clean and scrape' entrance system



DARK GREY



DARK BROWN



HOLLY GREEN



OXFORD BLUE



BLACK

## Standard colours

PRODUCT	HEIGHT	WEIGHT	STANDARD ROLL SIZES		
Frontrunner Entry	14mm	10.5 kg/m <sup>2</sup>	10m x 60cm	10m x 91cm	5m x 120cm

To ensure maximum flexibility and convenience Frontrunner Entrance System can be delivered in rolls or cut to size - ask your salesperson for details.

Product Code FRR

The original successful product, from which the system evolved, Frontrunner Entry has an aggressive diamond tread pattern that literally scrapes dirt off shoes - and an open grid structure that allows it to fall out of the way, Frontrunner Entry is uniquely effective in helping prevent dirt from entering buildings. With practicality in mind Frontrunner Entry is specially designed to present no problems to high heels or small wheeled traffic. Frontrunner Entry can be used in combination with other products from the Frontrunner Entrance Flooring System range for a complete interior and exterior entrance matting solution.

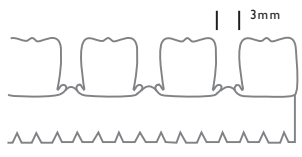


THE MAIN BENEFITS

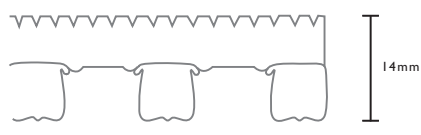
- ◆ Scrape and clean
- ◆ Roll format for one piece large area coverage
- ◆ Indoor or outdoor use
- ◆ Certified slip resistance
- ◆ Heel & wheel proof system
- ◆ Available in low profile format - see page 8



← DIRECTION OF TRAFFIC →



SHOWN ACTUAL SIZE: SIDE ELEVATION



FRONT ELEVATION



For modules and ancillary range see pages 20 & 21

# FRONTRUNNER MODULES

Frontrunner modules can be positioned in seconds and are available in three standard sizes as shown below, with factory fitted ramped edging to four sides.

## Frontrunner Entry

PRODUCT	HEIGHT	SIZE OPTIONS (cm)		
Frontrunner Entry	14mm	80 x 120	100 x 150	110 x 200

Standard ex-stock colours:

DARK GREY (SEE PAGE 6)



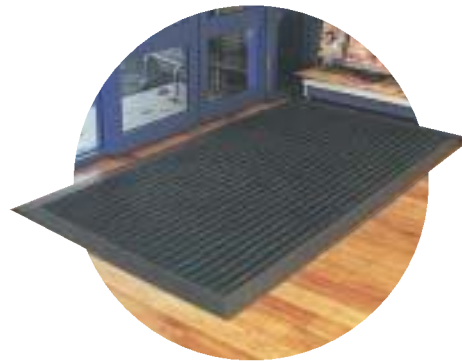
## Frontrunner Plus

PRODUCT	HEIGHT	SIZE OPTIONS (cm)		
Frontrunner Plus	16mm	80 x 120	100 x 150	110 x 200

Standard ex-stock colours:

DARK GREY with 80/20+ GREY

HOLLY GREEN with 80/20+ GREEN (SEE PAGE 20-21)



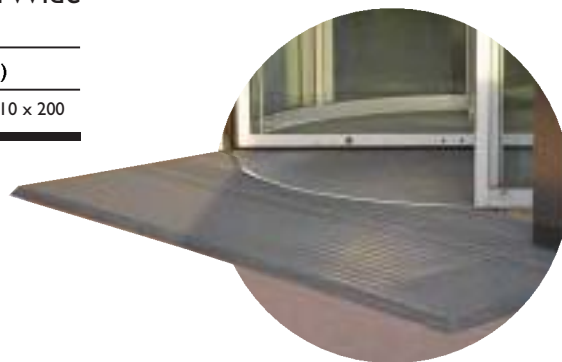
## Frontrunner Brush & Frontrunner Brush Wide

PRODUCT	HEIGHT	SIZE OPTIONS (cm)		
Frontrunner Brush	19mm	80 x 120	100 x 150	110 x 200

Standard ex-stock colours:

DARK GREY

BLACK (SEE PAGE 10-11)



## Ancillary fixings to exactly meet your needs

To ensure Frontrunner Entrance Systems remain stylish and serviceable, we have a full range of fixings made to the same exacting standards. They are all purpose designed and are simple to install during actual entrance fit out. For full details visit [www.frontrunnerplus.com/installation.htm](http://www.frontrunnerplus.com/installation.htm)

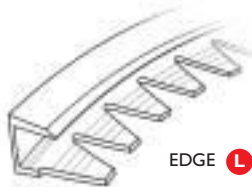


### Recessed Mat Frames

This is our range for dividing up large installations and framing recessed installations to produce secure siting and level and smooth transitions.

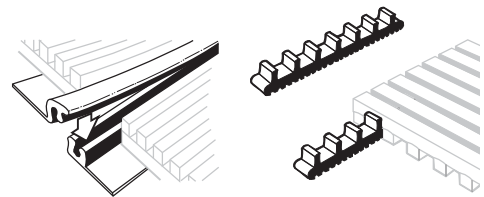
### Formable Trims

These frames finish the Frontrunner system for installations with a curved design.



### Flexible PVC & Aluminium Edging Strip

For surface mounted applications to ease wheeled traffic. The aluminium edges come with fixing screws and plugs for permanent fixing.



### Connector Clips

Used to join large area installations together; usually those that are surface mounted rather than recessed.

### How to make sure you get the right ancillaries

When specifying your Frontrunner entrance flooring system simply provide the overall dimensions and indicate the direction of traffic. For non-rectangular installations, please provide a drawing.

We will detail requirements in a same day quotation.



Illustration of where frames and trims are used.

# SPECIFICATIONS & DATA

## Sizes & Weights *(all dimensions are nominal)*

PRODUCT	LENGTH (m)	HEIGHT (mm)	WIDTHS (cm)		WEIGHT (kg/m <sup>2</sup> )
	<i>tolerances</i> 0/+0.3	+/-0.5	+/- 1 *(FEFS 0 to +2)		
Fronrunner Entry or XT	10	14	60	91	10.5
Fronrunner Entry or XT	5	14		120	10.5
Fronrunner - low profile	10	10	60	91	8.7
Fronrunner - low profile	5	10		120	8.7
Fronrunner Plus	10	14/16	60	91	10.5
Fronrunner Plus	5	14/16		120	10.5
Fronrunner Plus - low profile	10	10/12	60	91	8.7
Fronrunner Plus - low profile	5	10/12		120	8.7
Fronrunner Brush	10	14/19	60	91	12.7
Fronrunner Brush	5	14/19		120	12.7
Fronrunner Brush Wide	10	14/19	60	91	12.7
Fronrunner Brush Wide	5	14/19		120	7.5

## General

<b>APPEARANCES</b>	Fronrunner Entry and Fronrunner XT; Open grid 'heelproof' design. Fronrunner Plus; Open grid 'heelproof' design with absorbent inserts. Fronrunner Brush; Open grid 'heelproof' design with nylon brush inserts. Fronrunner Brush Wide; Wide spaced open grid design with nylon brush inserts.
<b>COLOURS</b>	see <a href="http://www.fronrunnerplus.com/downloads/FR_colours.pdf">www.fronrunnerplus.com/downloads/FR_colours.pdf</a> Vinyl Grid; 5 homogenous stable colours Absorbent Inserts; 18 colour choices Nylon Inserts; Dark Grey or Black
<b>DURABILITY</b>	One piece all welded construction for maintenance free life.
<b>INSTALLATION</b>	Recessed wells; <a href="http://www.fronrunnerplus.com/downloads/Installation_Guide_Recessed.pdf">www.fronrunnerplus.com/downloads/Installation_Guide_Recessed.pdf</a> Surface mounted applications; <a href="http://www.fronrunnerplus.com/downloads/Installation_Guide_Surface.pdf">www.fronrunnerplus.com/downloads/Installation_Guide_Surface.pdf</a> Framing, Edging and Ramp edging available; <a href="http://www.fronrunnerplus.com/modules.htm">www.fronrunnerplus.com/modules.htm</a>
<b>WORKABILITY</b>	Available in rolls or cut to size for ease of installation. Flexible vinyl construction is easy to trim and shape on site.
<b>USES</b>	Entrance Flooring Systems for Retail, Hospitality, Offices, Restaurants, Leisure, Industrial, Educaiton etc.

## Technical Data

<b>ACOUSTIC</b>	Flexible Vinyl Grid; Excellent sound absorption properties.
<b>CHEMICAL</b>	Vinyl Grid ; Resistant to most acids, alkalines and oils (for specific chemical resistances refer; Chemical Resistance of PVC, Nov 2003, 10 pages, available from Plastic Extruders Ltd.)
<b>COMPOSITION</b>	Vinyl Grid; Flexible (DINP plasticised) PolyVinyl Chloride Absorbent Inserts; see below Nylon Inserts; see below
<b>FLAMABILITY</b>	Vinyl Grid; DIN 4102 Part 1 - Classification B2 BS 2782 Part 1, method 140A: 1992 (ISO 1210:1992) Absorbent Inserts; BS 4790/1972 - Low radius of char Nylon Inserts; Nylon 6.6 monofilaments
<b>SLIP RESISTANCE</b>	Vinyl Grid; ASTM F 1677 (Dry/Wet); <b>Fronrunner</b> (0.6/0.6) DIN 51130 <b>Fronrunner</b> R11, V10
<b>THERMAL</b>	Vinyl Grid; Functional -23°C +60°C (slight size variation may occur at temperature extremes).
<b>UV LIGHT</b>	Vinyl Grid; Resistant to PVC degradation (red colour is not colourfast in direct sunlight)
<b>WARRANTY</b>	3 years - for full statement see <a href="http://www.fronrunnerplus.com/downloads/FR_warranty.pdf">www.fronrunnerplus.com/downloads/FR_warranty.pdf</a>

### Absorbent inserts (Green & Grey 80/20/+)

<b>Construction:</b>	Twist Pile
<b>Pile Content:</b>	80% wool 20% nylon + nylon monofilament.
<b>Pile Weight:</b>	1450 g/m. ± 5%.
<b>Pile Height:</b>	6mm approx.
<b>Total Insert Thickness:</b>	8mm approx.
<b>Total Insert Weight:</b>	4.7 kgs/m approx.
<b>Backing - Primary:</b>	Non-woven polyester.
<b>Backing - Secondary:</b>	PVC incorporating stabilisers.

### Absorbent inserts (Basalt, Limestone, Slate & Sandstone patterned)

<b>Construction:</b>	Cut Pile
<b>Pile Content:</b>	100% polyamide.
<b>Pile Weight:</b>	1000 g/m. ± 5%.
<b>Pile Height:</b>	6 mm.
<b>Total Insert Thickness:</b>	9 mm.
<b>Backing - Primary:</b>	Non-Woven Polyester.
<b>Backing - Secondary:</b>	PVC incorporating stabilisers.
<b>Flammability:</b>	BS 4790 1972 - Low radius of char.

### Absorbent inserts (302, 3021, 3025, 3031, 3035, 3055, 3041, 3045, 3051, 307, 3071 & 3061 insert)

<b>Construction:</b>	Tufted, Cut Pile
<b>Pile Content:</b>	100% polyamide.
<b>Pile Weight:</b>	700 g/m. ± 5%.
<b>Pile Height:</b>	± 6.9 mm.
<b>Total Insert Thickness:</b>	± 9.0 mm.
<b>Total Weight:</b>	± 3,120g/m.
<b>Backing - Primary:</b>	Non-Woven Polyester.
<b>Backing - Secondary:</b>	Vinyl compound.

### Nylon brush inserts

<b>Construction:</b>	Aligned Tufting.
<b>Bristle Content:</b>	Nylon 6.6 Monofilaments.
<b>Bristle Diameter:</b>	0.3 mm.
<b>Bristle Height:</b>	4.5 mm.
<b>Total Insert Thickness:</b>	12 mm.
<b>Backing:</b>	PVC.